

**SPEED, POWER AND DURABILITY  
UNEQUALLED IN THIS CLASS .....  
FOR ADDED SAFETY IN HIGH-  
FREQUENCY OPERATIONS .....**

### Standard Specifications

- Power Source 3-phase 380V 50Hz
- Operating method Push button switch operations  
For Suspended and Frame mounted type (Not exceeding 3t) : 2points(U and D)  
For Suspended and Frame mounted type (More than 5t) : 4 points(On, Off, U and D)  
For Regular type(Not exceeding 3t) : 6 points(U, D, E, W, S and N)  
For regular type(more than 5t) : 8 points(On, Off, U, D, E, W, S and N)
- Rating 30 min. (JIS C 9620)

**Note : These hoists cannot be used for lift  
( elevator for passengers )**

Type	Lifting Capacity (t)	Load-lifting Head (m)		Wire rope			Hoisting				Travelling								
							Speed (m/min)	Motor			Mono-rail, Low-headroom				Double-rail				
								Output (kW)	Current at 380V (A)	Poles	Speed (m/min)	Motor			Speed (m/min)	Motor			
												Output (kW)	Current at 380V (A)	Poles		Output (kW)	Current at 380V (A)	Poles	
S	1/2	6	12	∅ 6.3	∅ 4	6 x W(19) B Class JIS G 3525	11	1.0	3.4	4	21	0.22	0.75	4	21	-	-	-	4
	1	6	12	∅ 8	∅ 6.3		8.4	2.9	7.9			0.5	1.5			-	-	-	
	2	6	12	∅ 10	∅ 8		6.7	6.2	15.7			0.85	2.2			21	0.5	1.5	
	3	6	12	∅ 12.5	∅ 9	6 x Fi(29) B Class JIS G 3525	5.8	8.3	19.6	6	12	1.5	3.9	15	15	0.85	2.2	4	
	5	8	12	-	∅ 11.2		5	10	25			0.85 x 2	2.2 x 2			0.85	2.2		
	7.5	8	12	-	∅ 14		4.2	-	*36			1.5 x 2	3.9 x 2			1.5	3.9		
	10	8	12	-	∅ 16		2.8	-	*39			-	-			1.5 x 2	3.9 x 2		
	15	8	12	-	∅ 20		2.1	-	*38			-	-			-	-		
	20	-	12	-	∅ 22.4		1.8	-	*39			-	-			0.75 x 4	2.2 x 4		
	30	-	12	-	∅ 25	-	-	-	-	-	-	-							
	40	6.5	-	-	∅ 22.4 (8falls)	-	-	-	-	-	-	-							
	45	-	12.5	-	∅ 25 (6falls)	-	-	-	-	-	-	-							
		-	19	-	-	-	-	-	-	-	-	-							

\* This meaning is reference value (not actual results)



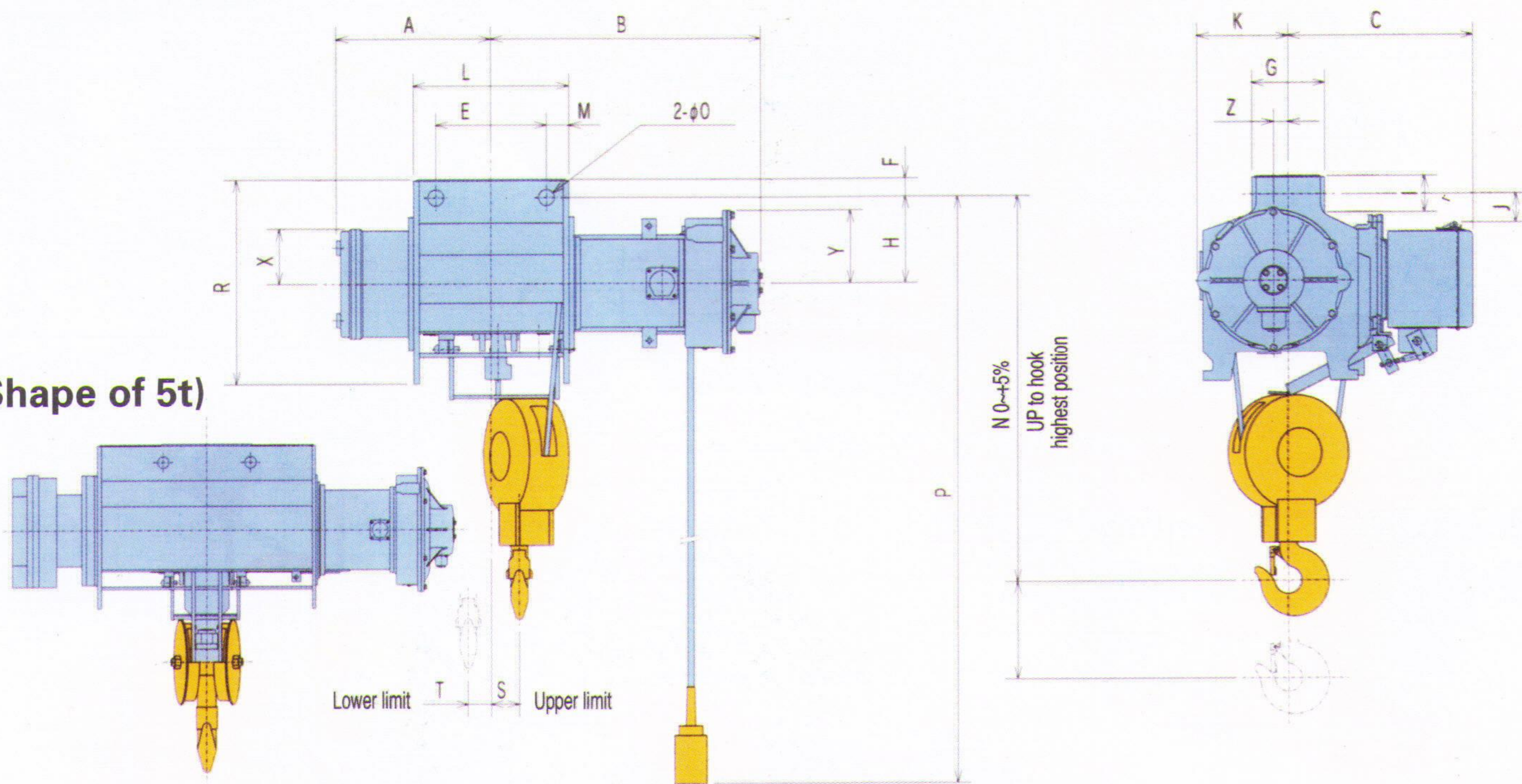
# Suspended Type

# S

(1/2t • 1t • 2t • 3t • 5t)



(Shape of 5t)



Model	S-1/2		S-1		S-2		S-3		S-5		
	LK2	HK2	LK2	HK2	LK2	HK2	LK2	HK2	LK3	HK3	
Cap. (t)	1/2		1		2		3		5		
Lift (m)	6	12	6	12	6	12	6	12	8	12	
Dimensions (mm)	A	287	457	287	474	322	479	341	510	646	771
	B	433	473	518	551	563	593	610	641	920	1045
	C	324		345		383		408		410	
	E	170	230	230	230	230	230	230	230	290	
	F	28	33	33		38		43		60	61
	G	140	177	117		151		176		229	
	H	155		160		177		215		225	
	I	75	78	63		67		80		105	106
	J	18		47		59		127		145	
	K	151		167		190		216		226	
	L	283	493	298	518	323	508	323	523	725	975
	M	32	42	34	67	47	75	46	77	217	342
	N	570		670		800		965		905	
	O	20	24	24		33		33		38	
	P	6000	12000	6000	12000	6000	12000	6000	12000	8000	12000
	R	328	333	373		425		518		546	
	S	50	93	71	105	58	101	60	97	-	
T	58	123	42	119	49	113	47	115	-		
X	87		107		140		172		200		
Y	85		105		150		150		143		
Z	20		36		30		30		30		
Weight (kg)	90	105	135	150	220	245	310	345	510	580	
Hook block weight (kg)	4.5		75		15		27		42		

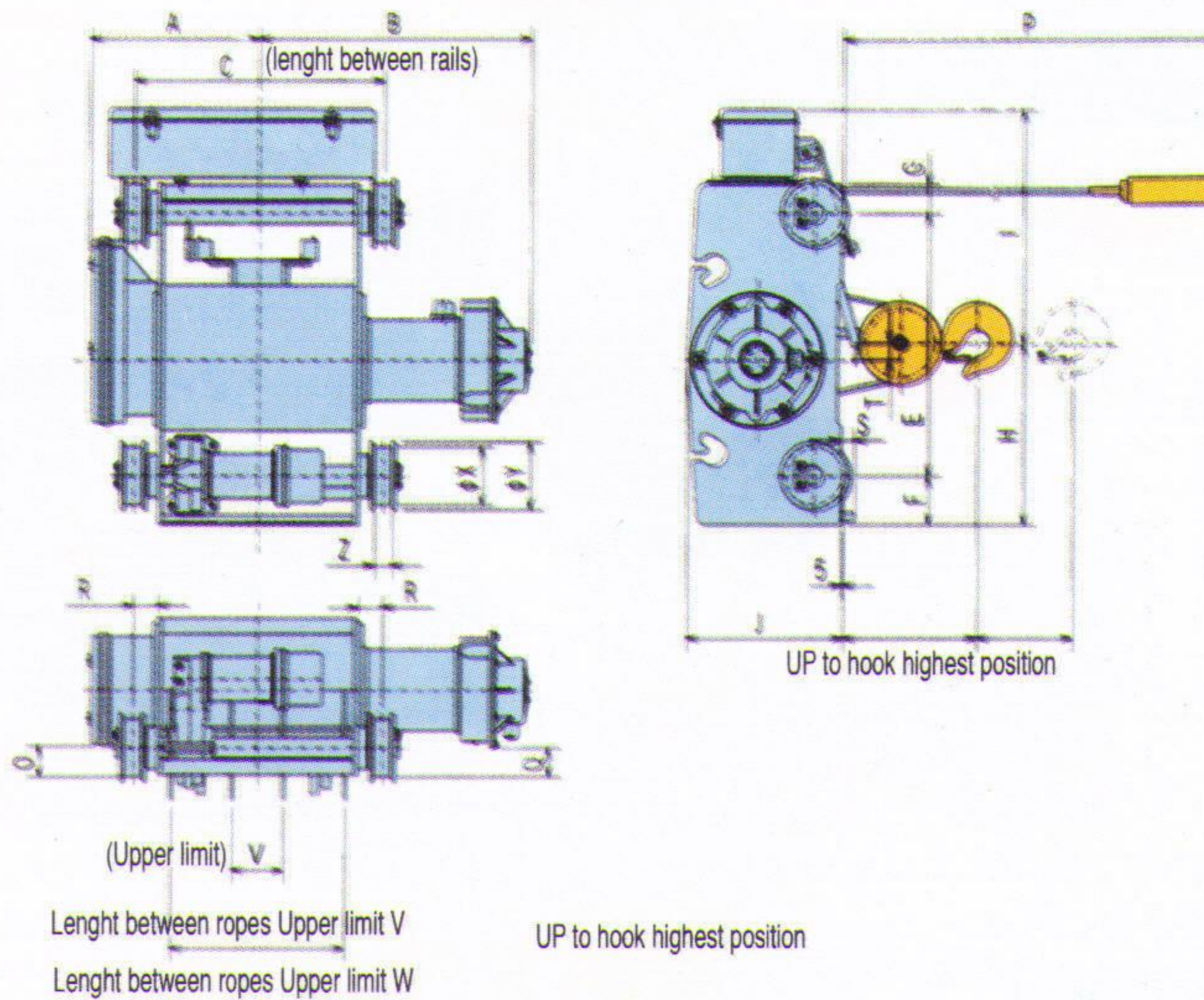
Note : In the case of S-1/2 , the position of pendent push button is on the side of hoisting deceleration section.

# Double rail Type

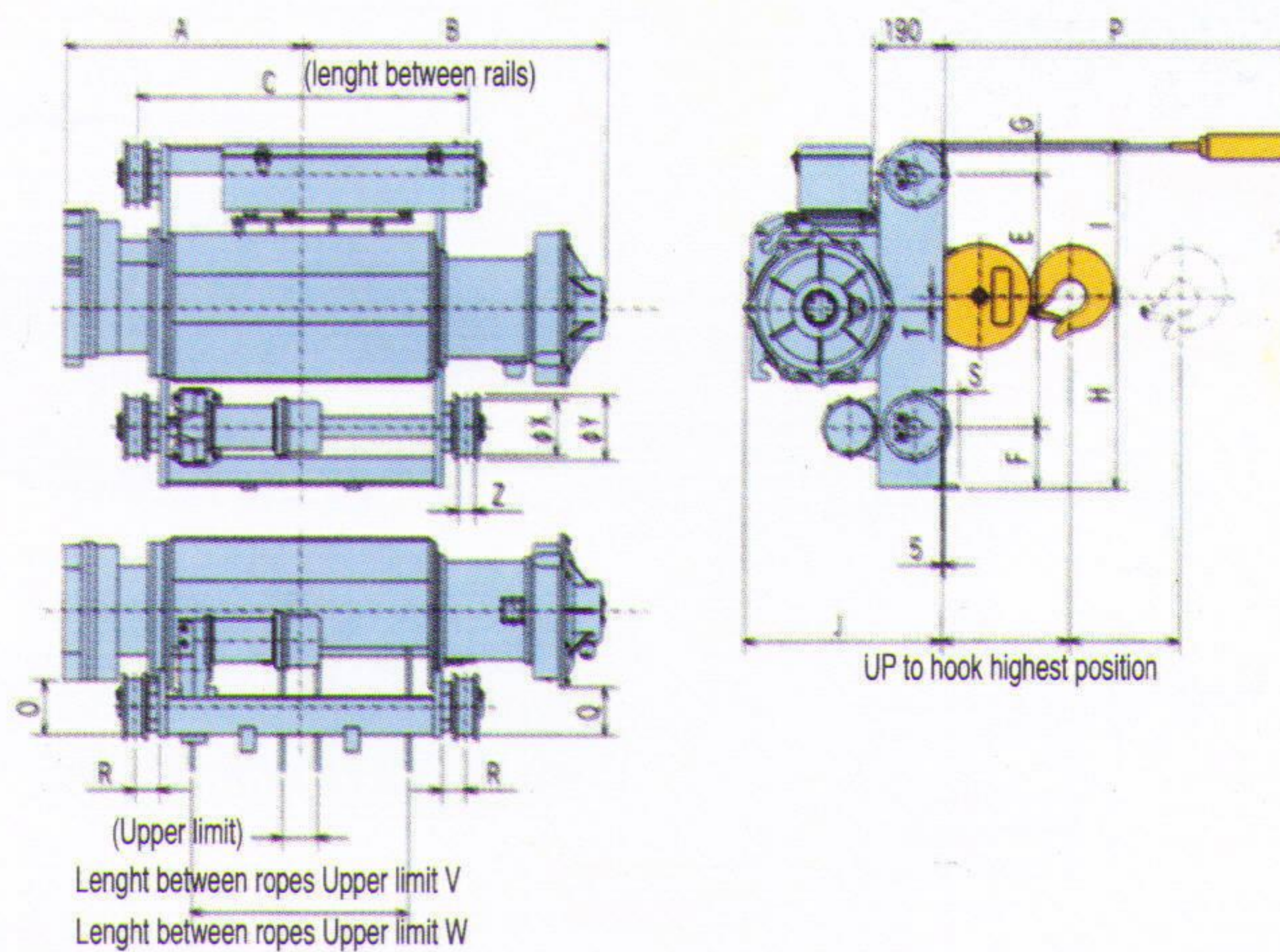
# S (3t • 5t)



## S-3



## S-5



Model	S-3		S-5		
	LR3A	HR3A	LR2A	HR2A	
Cap. (t)	3		5		
Lift (m)	6	12	8	12	
Dimensions (mm)	A	440	590	646	771
	B	711	861	920	1045
	C	650	950	900	1150
	E	680		680	
	F	125		167	
	G	75		88	
	H	468		517	
	I	605		418	
	J	410		540	
	N	345		346	
	O	52		125	
	P	6000	12000	8000	12000
	Q	75		170	
	R	63		65	
	S	35		40	
	T	43		30	
	V	135	130	97	100
	W	453	753	590	840
X	150		150		
Y	175		175		
Z	45		45		
Weight (kg)	425	475	600	680	
Hook block weight (kg)	25		42		
Applicable I-Beam (mm)	12 kg rails or 38 mm. steel square bars				

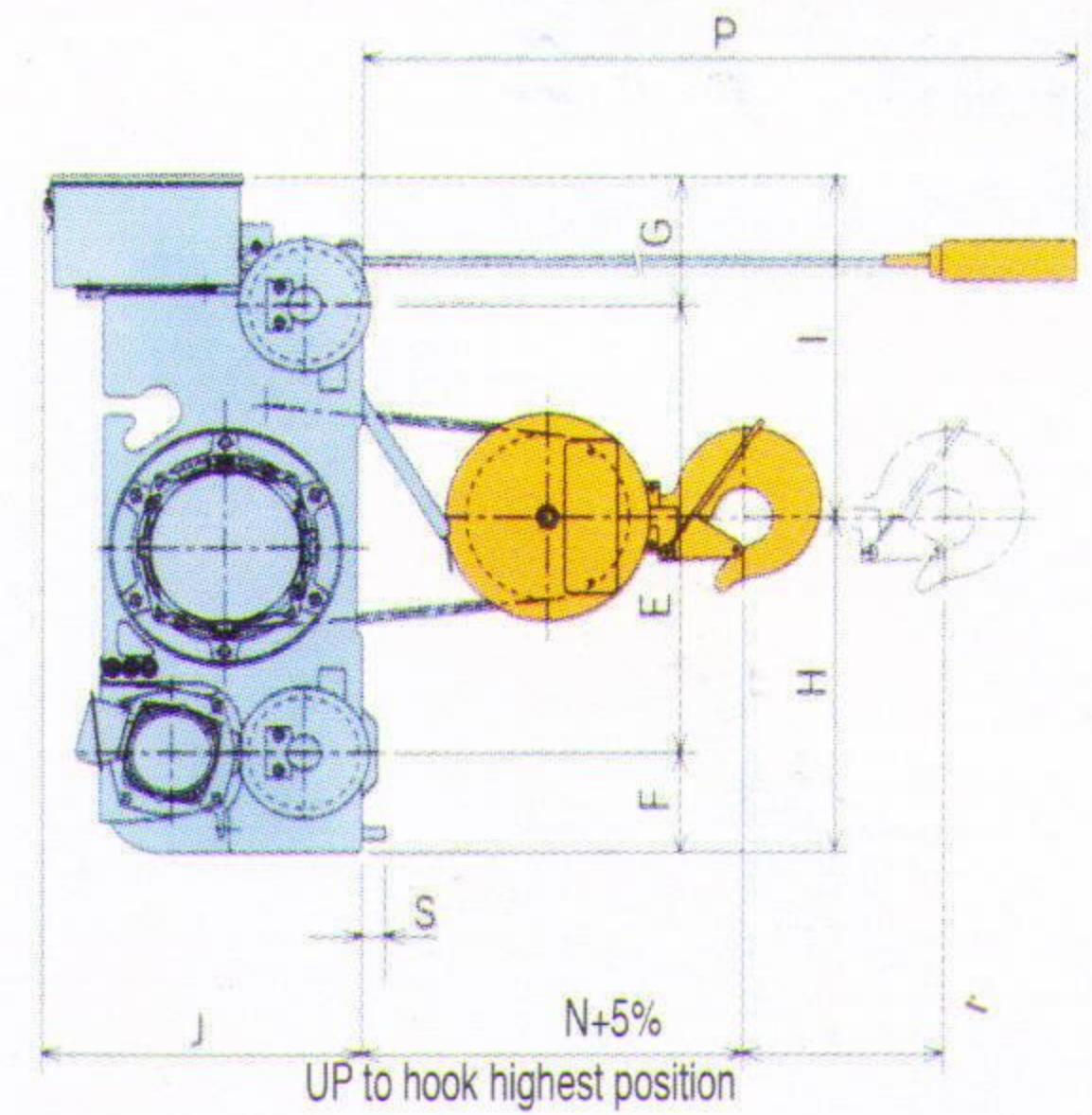
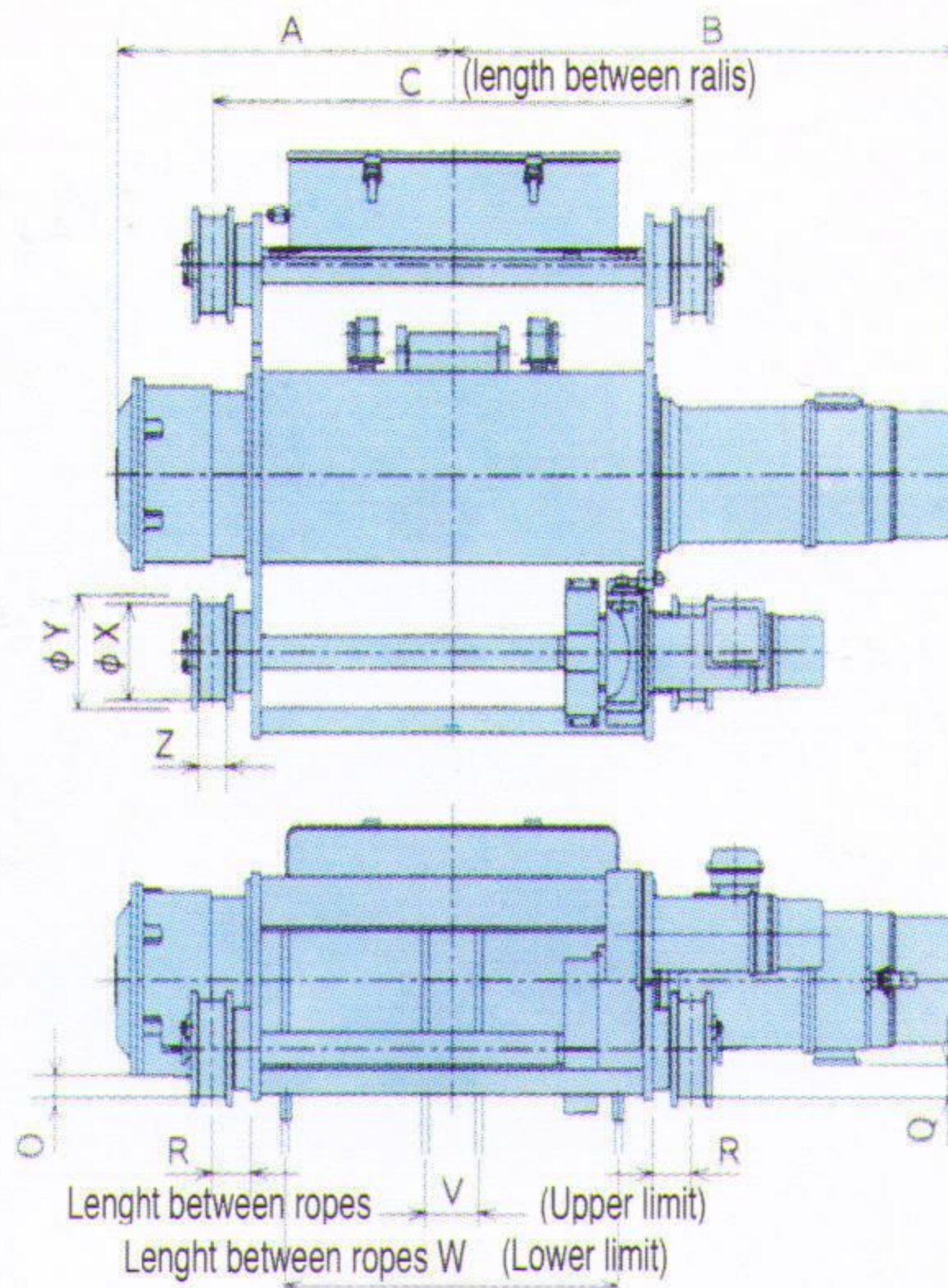
# Double rail Type

(7.5t • 10t • 15t • 20t • 30t)

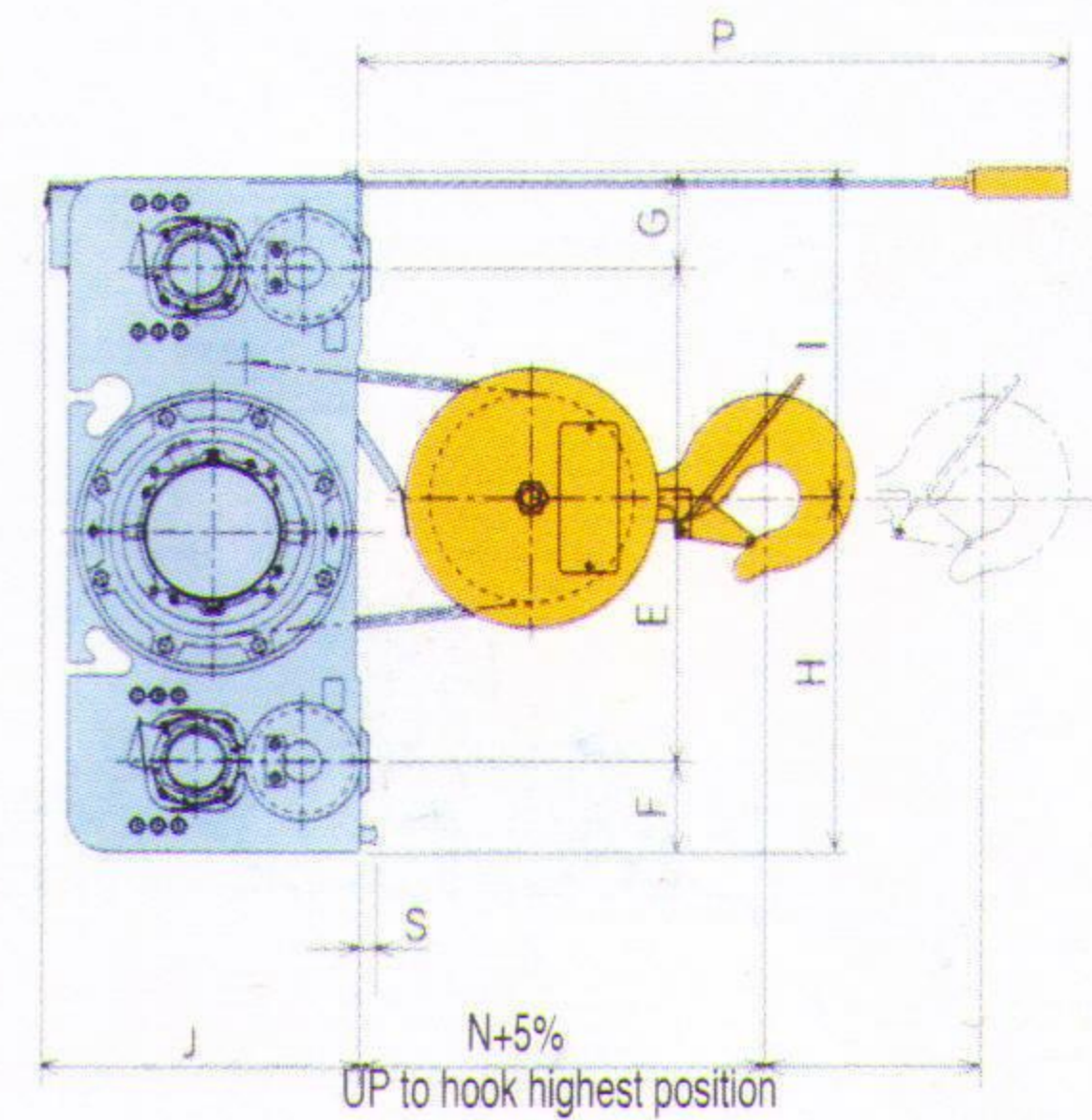
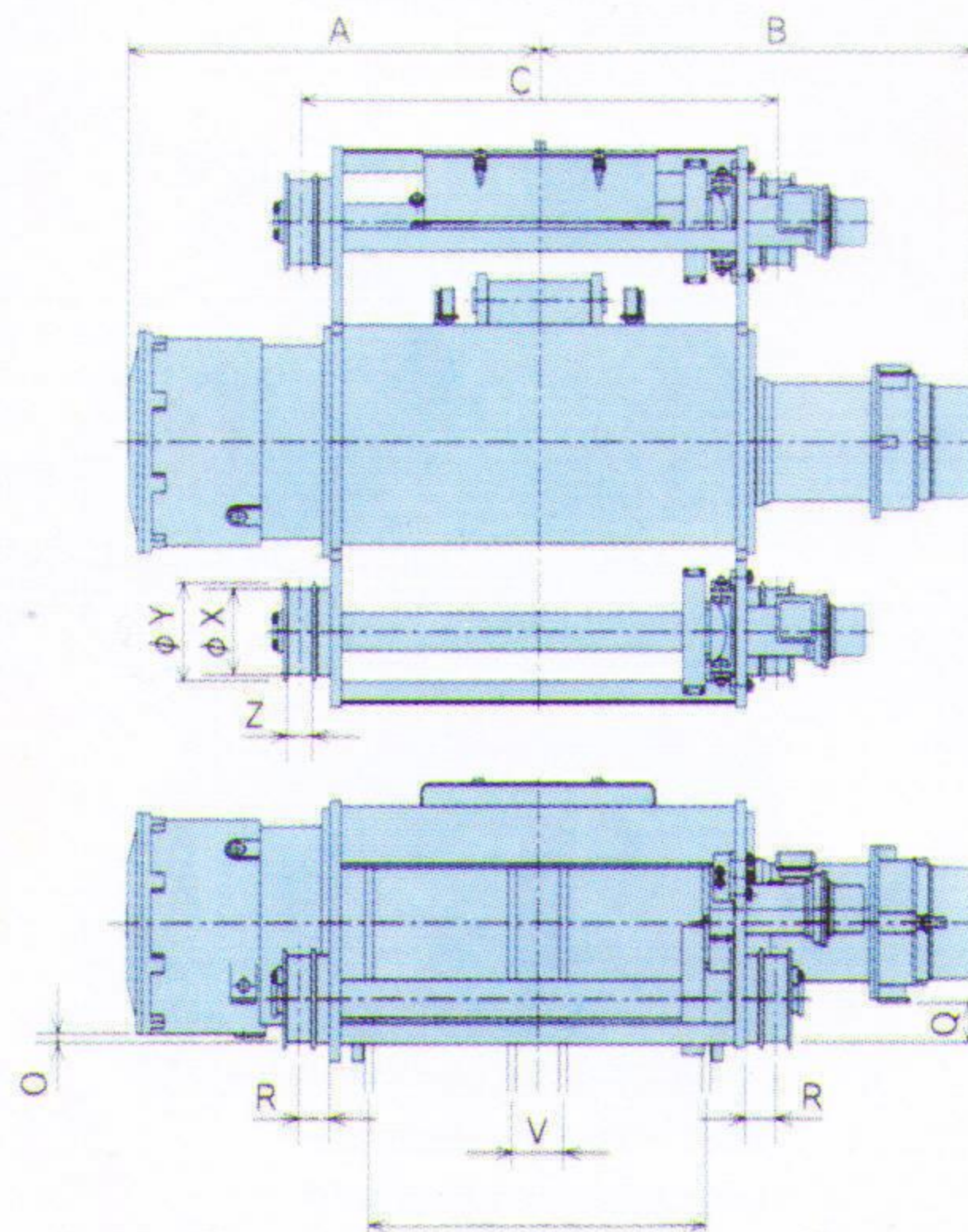


# S

## S-7.5 • 10 • 15 • 20



## S-30



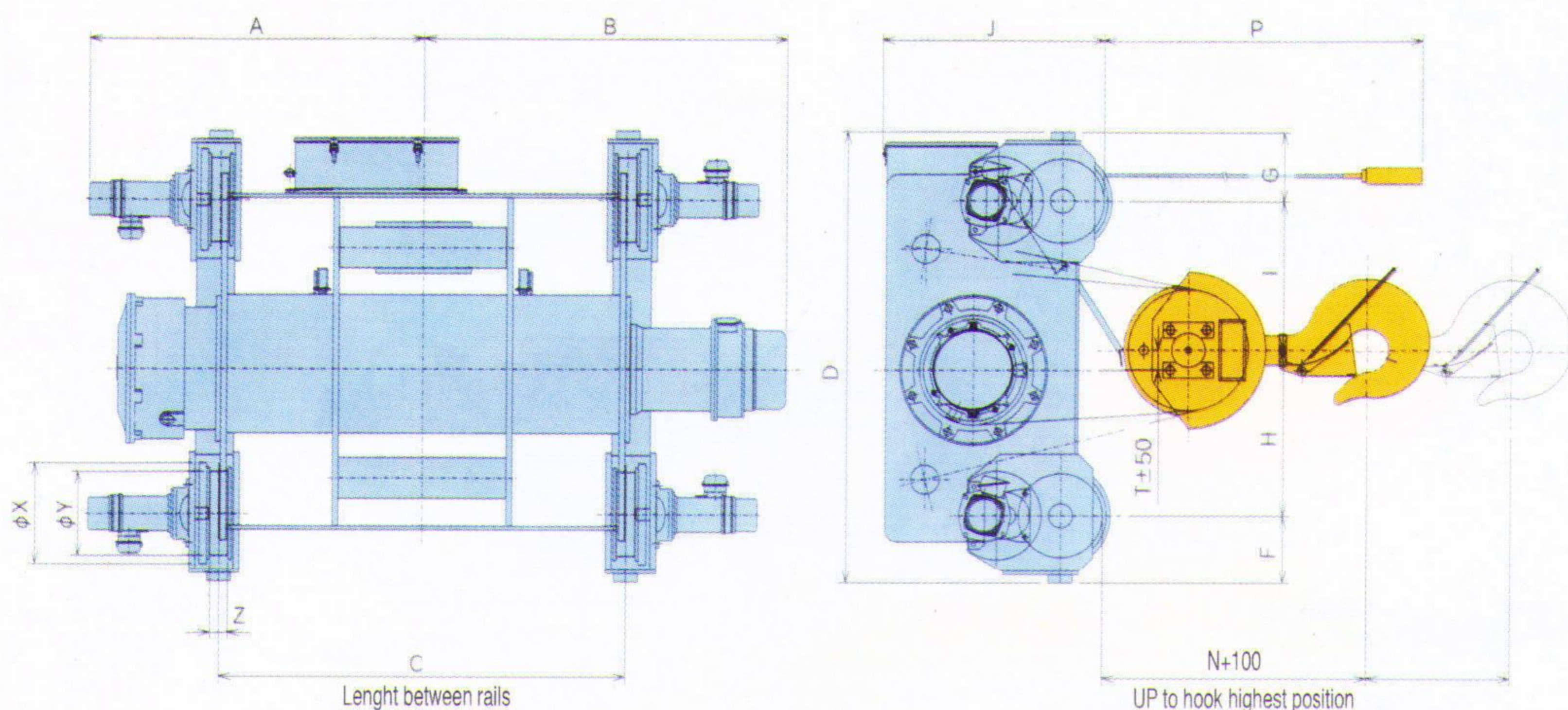
Model	S-7.5		S-10		S-15		S-20-HR	S-30-HR	
	LR	HR	LR	HR	LR	HR			
Cap. (t)	7.5		10		15		20	30	
Lift (m)	8	12	8	12	8	12	12	12	
Dimensions (mm)	A	669	749	719	844	799	949	999	1209
	B	1004	1129	959	1084	1085	1235	1235	1285
	C	950	1200	950	1200	1000	1300	1300	1400
	E	760		840		1000		1045	1190
	F	170		170		220		220	220
	G	223		233		243		248	242
	H	570		613		760		790	850
	I	583		630		703		723	802
	J	543		543		743		748	763
	N	630		710		860		910	1020
	O	40		38		30		32	15
	P	8000	12000	8000	12000	8000	12000	12000	12000
	Q	75		30		85		120	115
	R	77		82		84		84	89
	S	45		55		55		55	55
	T	50		53		70		70	80
	V	105	80	100	100	110	135	125	150
W	660	910	620	870	660	960	945	990	
X	190		190		250		250	250	
Y	225		225		285		285	285	
Z	52		52		58		58	70	
Weight (kg)	900	980	1250	1360	1900	2100	2500	3600	
Hook block weight (kg)	80		100		190		280	380	
Hook block weight (kg)	15 kg rails or 44 mm. steel square bars					22 kg rails or 50 mm. steel square bars			37 kg rails or 66 mm steel square bars

# Double rail Type

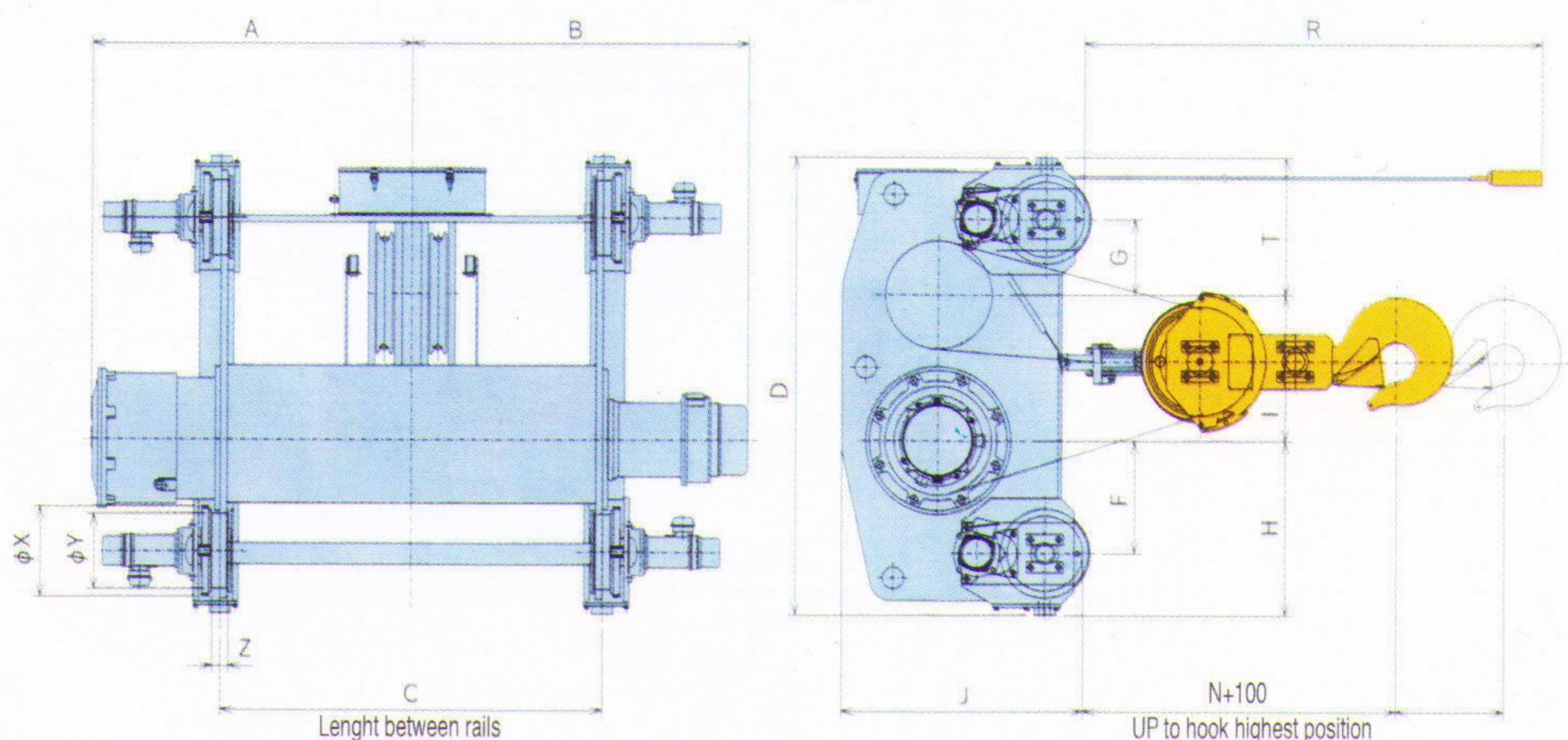
# S

(40t • 45t)

## S-40



## S-45



Model	S-40		S-45		
	LR	HR	LR	HR	
Cap. (t)	40		45		
Lift (m)	6.5	11.5	12.5	19.0	
Dimensions (mm)	A	1399	1749	1490	
	B	1515	1865	1565	
	C	1700	2400	1780	
	D	1874		2114	
	F	287		520	
	G	287		350	
	H	681		807	
	I	619		670	
	J	930		1125	
	N	1110		1720	
	P	7500	12000	11000	16000
	T	81		637	
	X	419		419	
	Y	350		350	
Z	75		75		
Weight (kg)	4800	5300	6000	6500	
Hook block weight (kg)	750		760		
Applicable I-Beam (kg)	37 kg rails or 65 mm. steel square bars		37 kg rails or 65 mm. steel square bars		